



LSU

Finance and Administrative Services
Child Care Center

February 2009



The vision of the LSU Child Care Center is to become a leading model of exemplary quality in early care and education by functioning as a support mechanism for families of the LSU Community and a focal point of excellence to agencies and organizations throughout the state and nation. By providing quality service, we will be recognized as a recruitment tool for students, faculty and staff thus supporting the positive growth at LSU.



Director's Corner



Dear Parents,

Thank you so much for contributing the beautiful snow pictures for our front bulletin board. The children have enjoyed seeing themselves and remembering the "big snow".

We have many exciting events planned for the second semester and we hope you can be a part of our festivities. We will have our Annual Tiny Tiger Mardi Gras Parade Thursday, February 19, 2009 at 3:30 pm. The children will parade with their parents and friends to celebrate Mardi Gras, LSU style.

The fourth annual "Tiny Tiger Fest" Spring family fun day will be held Saturday, April 4, 2009. Please mark your calendars. We are so excited for this year's events and we know it's one you won't want to miss.

Laissez les Bons Temps Rouler!

Michelle DeMeulenaere

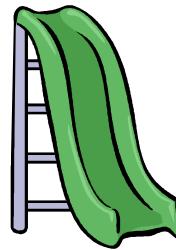
Center Director

Facilities Update

A special thanks to Jerome Dugas, Sean Corliss and Edward Tessmer for putting together 54 boxes of new toys and equipment delivered to the Center through a quality incentive grant. We appreciate your time!



The PAC NEWS



Come one, come all, bring your brooms, blowers and rakes and join us! Our semi-annual playground clean-up day will be held Thursday, February 12, 2009 at 3:30pm. Our rain-out date will be Tuesday, February 17, 2009. Our next PAC meeting will be Tuesday, February 17th at 4:30 in the multi-purpose room. We will focus on planning Tiny Tiger Fest. This is our biggest project of the year and we need every class represented!



Mark your Calendars!

Playground Clean-up

Thursday, February 12th. See PAC news for more information.

3rd Annual Tiny-Tiger Mardi Gras Parade

Thursday, February 19th from 3:30-4:30. Children may bring their decorated wagons, strollers, costumes and throws. (Please no bicycles, tricycles, or motorized vehicles)

5th Annual Tiny Tiger Fest

The center's largest event and spring family fun day is scheduled for Saturday, April 4th from 2-4pm.

ATTENTION PARENTS:

The LSU Child Care Center will be closed Tuesday, February 24th in observance of Mardi Gras. We hope you have a safe and fun holiday!



ATTN: THE LSU SPEECH, LANGUAGE AND HEARING CLINIC WILL BE AT THE LSU CHILD CARE CENTER FOR THE SPRING SEMESTER

The Clinic will be offering free speech-language-hearing screenings. All children are eligible for a hearing screening. Children, ages 2-5 years old will be eligible for the full screening. If you are interested, please complete the attached form and return it to the front desk.



February Health Corner

How can I keep my child from getting the flu?

People with the flu are most infectious during the 24-hour period before symptoms appear and also on the days when the symptoms are their worst.

Good hygiene and regular housecleaning are the best ways to prevent the flu from spreading. The following are more ways to help prevent the spread of the flu:

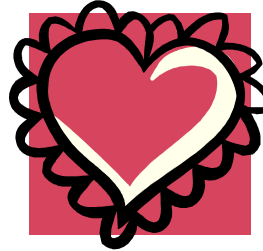
- Cough and sneeze into a tissue. If you don't have time to get a tissue, bend your arm and sneeze or cough into it. Teach your children to do the same.
- Use tissues for wiping runny noses and to catch sneezes. Throw them away in the trash can after each use.
- Avoid kissing your child on or around the mouth or face when either of you are ill.
- Make sure everyone washes their hands before and after coming into close contact with someone with the flu.
- Don't let children share pacifiers, cups, spoons forks, washcloths, or towels. Never share toothbrushes.
- Use paper cups in the bathroom and kitchen and throw them in the trash after each use.
- Wash dishes, forks and spoons in hot, soapy water or in the dishwasher.
- Change cloth towels often and wash them in hot water.
- Wipe all surfaces, including toys, with a disinfectant or soap and hot water. Viruses can live for more than 30 minutes on doorknobs, toilet handles, countertops and even toys.
- Keep children, particularly infants, away from second hand tobacco smoke. Don't smoke around your children. Children who are exposed to tobacco smoke cough and wheeze more and have a harder time getting over the flu.

American Academy of Pediatrics, September 2008

February Weekly Classroom Themes

- February 2nd-6th- Land Transportation
- February 9th-13th – Water Transportation
- February 16th –20th – Louisiana Culture
- February 23rd – 27th – Mardi Gras

THIS FEBRUARY, LET THE LSU CCC BE YOUR VALENTINE!



Be a part of LSU Child Care Center's Annual Giving Campaign! Become a guardian angel and make a contribution to improve the high-quality care your child receives. Doing so helps to sustain excellence at the LSU CCC in addition to providing a safe and stimulating environment where children can learn.

For more information, call 578-7882 or see the front desk.

“A SPECIAL THANKS TO OUR RECENT ANGELS ; YOU HAVE OUR HEARTS!”

Gold Donor

Hwang Lee and Kyung Lim

William Todd Monroe

(In honor of teacher's Kristen Stewart & Sarah Ocmand)

Silver Donor

Hariprasas & Sudheera Rachamalla

Brandon & Norah Richardson

Vivian Smith

Bronze Donor

Cassie Breaux

Michelle DeMeulenaere

LSU CCC CONTACT INFORMATION

Front Desk	578-7882	Ladybugs	578-4825
Bears	578-4825	Lambs	578-4851
Bluebirds	578-4883	Pandas	578-4881
Butterflies	578-4883	Pelicans	578-4855
Koalas	578-4819	Puppies	578-4886
Dolphins	578-4888	Alligators	578-4881
Frogs	578-4819	Tigers	578-4855
Kittens	578-4888	Penguins	578-4851

Center Director: Michelle DeMeulenaere 578-0538