



# LSU

STUDENT LIFE AND ACADEMIC SERVICES  
Child Care Center

## June 2008

The vision of the LSU Child Care Center is to become a leading model of exemplary quality in early care and education by functioning as a support mechanism for families of the LSU Community and a focal point of excellence to agencies and organizations throughout the state and nation. By providing quality service, we will be recognized as a recruitment tool for students, faculty and staff thus supporting the positive growth at LSU.



### Director's Corner



Dear Parents,

Teachers Appreciation Week was such a great success! The teachers enjoyed the special treats each day. It was so wonderful seeing the smiles on the children's faces as they walked by the front desk with their special treats. Thank you for your time and efforts. A special thanks to Danielle Satawa and the PAC for coordinating the activities for that week.

In the month of June we have many exciting things planned to celebrate Summer. Please stay tuned for the schedule of resource visitors. Tumble time will continue over the Summer, however the schedule will be changing. The new schedule will be posted in the front lobby the first week in June. Thank you for your patience.

Michelle DeMeulenaere  
Center Director

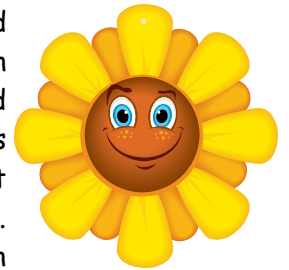


### Facilities Update

We are very excited to announce that we will be receiving "pour in place", for our playgrounds. The pour in place will replace the mulch that is currently under the play equipment.

### PAC NEWS

Thanks to all that participated in Teachers Appreciation Week. The teachers enjoyed a large breakfast, snacks throughout the week and a sit down lunch on Wednesday. This week could not have been possible without the help of all of our wonderful parents. It is so nice to work with such a fantastic group of volunteers!



### New Tuition Rates for School Year 2008-2009

Effective August 1, 2008

Sliding Fee Scale Based on Household Income	Tuition Full Time Care Year 2008-2009
\$0-\$25,000.00	\$565.00/month
\$25,001.00-\$50,000.00	\$615.00/month
\$50,001.00-\$99,000.00	\$665.00/month
\$100,000.00 +	\$715.00/month
Community Rate	\$735.00/month

### June Weekly Themes

June 2nd-6th-Summer

June 9th-13th-Summer Safety

June 16th-20th-Frogs/Camping/  
Hiking

June 23rd-27th-Watermelon/  
Picnics



See an extended version of this months newsletter on our website:

[www.lsu.edu/childcare](http://www.lsu.edu/childcare)



For the safety of your child, please have the child/children wear only closed toed shoes at the center. The children are very active on the playground (running, jumping, riding bikes, etc...) closed toed shoes could prevent any unnecessary injuries.



## Health Corner

### The Best Way to Play

"Play is essential to development because it contributes to the cognitive, physical, social and emotional well-being of children of youth," says Dr. Ginsberg.

Children who don't get enough time to act out or take charge of the world around them may show signs of distress. The same is true for children who are constantly pushed beyond their comfort limits. Symptoms of anxiety may include:

- Avoiding other people
- Lack of appetite
- Nervousness
- Disrupted sleep
- Headaches
- Stomach aches
- Depression

Even in a safe, nurturing environments, playtime is threatened by a nationwide reduction in school recess time and families' increasingly hectic lifestyles. It's true that school work and schedules teach important life skills. But most experts agree that children's health and everyday progress stand to suffer when scheduled activities leave no room for "free" playtime.

Most pediatricians also warn against entertainment that fails to stimulate interaction or thought- especially television shows and computer games. "These tools and programs are heavily marketed, and many parents have unfortunately grown to believe that they are a requirement of good parenting and a necessity for appropriate development," says Dr. Ginsberg.

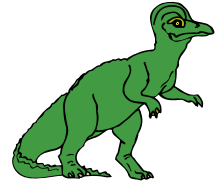
Putting play back on the schedule doesn't have to be difficult, though. Old-fashioned toys like rattles for babies, blocks for toddlers, and jump ropes for school-aged children still work wonders. Even better, simply remember to carve out plenty of family time for talking, working on a hobby, playing make-believe, and reading together.

*Healthy Children April 2007*

## Dinosaurs



The Penguin class has created something entirely unexpected. The class took creativity to another level by creating "dinosaur feet".



The children used their imaginations to pretend that they were the dinosaurs from long, long ago.

## Fossils, Fossils and more Fossils...

As part of our unit on fossils "Olivia's grandfather", Mr. Charles Williams shared his collection of fossils and rocks with all of our preschool classrooms.



The children were amazed to see such magnificent fossils.



## LSU CCC Contact Information

Front Desk	578-7882	Ladybugs	578-4851
Bears	578-4825	Lambs	578-4883
Bluebirds	578-4888	Pandas	578-4886
Butterflies	578-4888	Pelicans	578-4881
Chicks	578-4819	Penguins	578-4883
Ducks	578-4825	Piglets	578-4855
Frogs	578-4855	Tigers	578-4881
Koalas	578-4851	Turtles	578-4819
Center Director: Michelle DeMeulenaere			578-0538

## Center Closures

The LSU Child Care Center will be closed:  
Independence Day- Friday, July 4, 2008  
Staff in-service—Friday, August 8, 2008  
Friday, October 10, 2008

## Attention Parents!

All enrichment classes ( Music and Spanish) ended in May. They will resume again in September. Our summer fun activities will begin in June. Stay tuned!



## LSU Mental Health Moment

The ABCs and 1,2,3's of School Readiness: Learning Through Play

In a national study of kindergarten teachers in 2000, teachers responded that over 20% of students did not have the social emotional skills needed to be ready for school. School readiness is multidimensional and includes not only a child's cognition and general knowledge but also the child's physical well being, gross and fine motor development, language skills, and social & emotional development. All of these can be learned through interacting and playing in a safe, nurturing environment. Skills needed for successful transition to kindergarten include self-confidence, an ability to develop positive relationships with peers and adults, an ability to concentrate and persist on challenging tasks, problem solving and effective communication. Playing is how infants, toddlers, and young children learn best. Through self and peer directed play, they learn self-regulation, how to feel comfortable with other kids and to make friends, how to function without parents, and how to handle strong emotions through pretend play. So when you ask your children what they did all day and they answer, "We just played", know that through all of the creative, engaging materials and guidance that their LSU CCC teachers provide, they also learned skills that will lead to success in kindergarten!

Just a reminder that I am available for parent consultation. I am at the center once a week on either a Wed. or a Thursday. My last day will be on August 8<sup>th</sup>. Contact your child's teacher or Michelle DeMeulenaere if you would like to arrange a time to talk with me.

Jane Freudenberger

## Classes for Parents

All classes require pre-registration and payment please contact the Parenting Center at 924-0123 for more information.

### Parenting the Strong-Willed Child

(for parents of toddlers through 12 years) Is your child strong-willed? Does he/she challenge you to the limit? This class will focus on the causes of the strong-willed temperament, discipline techniques that work with strong-willed children and learning how to avoid power struggles with your strong-willed child.

Fee: \$10.00 per person

Date: Thursday, July 10th at 7:00-9:00 p.m.

### Sleep Tight: Understanding and Managing Infant and Toddler Sleep

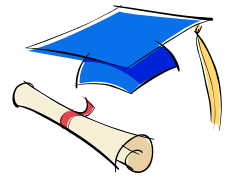
This lecture will review basic principles of sleep along with strategies for improving your baby and child's sleep.

Cost: Free

Date: Thursday, June 12th at 6:00-7:30 p.m.

## Moving on Up: Pre-K Graduation

The Bears and the Ducks classrooms hosted a Pre-k graduation for their classrooms on Friday, May 23, 2008. This event was held at University Recreation Center.



### Congratulations to the following graduates:

Justin M., Tyler S., Anya S., Sasha F., Dustin G., Alexandra H., Uchechukwu U., Jonathan R., Matthew N., Chase M., Ethan B., Caroline C., Eugene J., Jackson D., Emmi E., April O., Mason M., Teagan M., Jackson R., Clay B., Shelby B., Teagan R., Maxwell M., Alexa G., Amelia Z., Brenna T., and Hanna L..

*"One generation plants the trees; another gets the Shade."*

*-Chinese Proverb*